



Product Service

CERTIFICATE

No. Z2 17 12 22757 997

Holder of Certificate: HAGS Aneby AB
 Grännavägen 7
 578 23 Aneby
 SWEDEN



Certification Mark:



Product: Chutes
 Slides

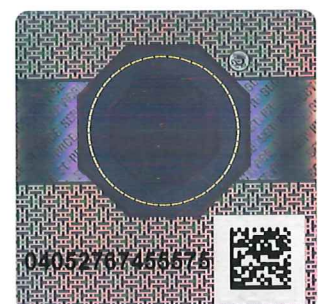
The product was tested on a voluntary basis and complies with the essential requirements. The certification mark shown above can be affixed on the product. It is not permitted to alter the certification mark in any way. In addition the certification holder must not transfer the certificate to third parties. See also notes overleaf.

Test report no.: 713124267-7

Valid until: 2022-12-26

Date, 2018-01-12 (Tobias Hofmann)

Page 1 of 2





Product Service

CERTIFICATE

No. Z2 17 12 22757 997

Model(s): Maggot, Big Maggot, Maggot House, Jolly, Swift, Galax, Rider, Rex, Eldrax, Portland

Parameters: All slides in different color options
 Surface: stainless steel, or rotary-cast polyethylene
 Slides: HPL or sheet steel hot galvanized, primed and powder lacquered, or rotary-cast polyethylen
 Tunnel slide: stainless steel, or rotary-cast Polyethylene
 Slide type: Free standing-, Attachment-, Tunnel-, Embankment-, Curve- and Helical slide.
 Free standing-, Attachment slide:
 Width of 0.45/1.00 m and a start section from 0.60 m to 2.5 m in height.
 Tunnel-, Embankment-, Curve- and Helical-slide:
 Width of 0.80 m and a start section from 1.20 m to 9.90 m in height.

Anchoring: Sunken concrete base
 Sunken steel base/frame
 Concrete foundation on site
 Anchoring on concrete (expansion bolt)

Tested according to: DIN EN 1176-1:2017
 EN 1176-1:2017
 DIN EN 1176-3:2017
 EN 1176-3:2017

Production Facility(ies): 02994

Page 2 of 2

TGF