



Product Service

CERTIFICATE

No. Z2 16 05 22757 928

Holder of Certificate: HAGS Aneby AB

Grännavägen 7
578 23 Aneby
SWEDEN



Certification Mark:



Product: Combination playing construction

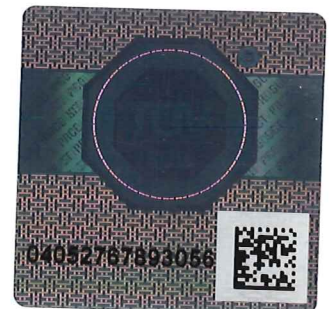
The product was tested on a voluntary basis and complies with the essential requirements. The certification mark shown above can be affixed on the product. It is not permitted to alter the certification mark in any way. In addition the certification holder must not transfer the certificate to third parties. See also notes overleaf.

Test report no.: 713078024-05

Valid until: 2021-05-18

Date, 2016-05-20
Page 1 of 2


(Jens Biesenack)





Product Service

CERTIFICATE

No. Z2 16 05 22757 928

Model(s):

HAGS UniPlay:
 Abbax; Abrid; Actus; Adantes; Admirka; Afrykos;
 Agrypso; Alanis; Alto; Amigo; Ango; Apollo; Arida;
 Arilo; Aslam; Assaril; Aureli; Avaren; Balakolo;
 Belidore; Bell; Bellom; Bengal; Bihar; Billores; Birao;
 Birro; Bolanta; Bozzi; Brann; Buridos; Byrmax; Cestore;
 Chaia; Chatar; Cixtona; Combur; Crox; Cullerma;
 Cybex; Dalux; Daxto; Dermida; Dio; Distra; Dumor;
 Ebrico; Ebriente; Eco Station; Ediana; Egrianta; Elinaz;
 Emarosa; Enzia; Epa; Eptix; Eriplos; Esten; Etoru; Exon;
 Feliz; Ficcorenta; Finn; Fogus; Fyrma; Galliente;
 Gare du Nord; Germinia; Gizzo; Gumbo; Gytro; Harira;
 Hecce; Helios; Hembra; Herakles; Heryton; Himbino;
 Homaria; Huxtor; Hydra; Ibax; Icco; Igge; Igma; Iktaz;
 Ipex; Ippy; Issens; Jadar; Jagur; Jilax; Jillbrad; Juniz;
 Juntas; Jynder; Kagig; Kandriano; Karamata; Karro;
 Kimber; Kolale; Kolo; Kopur; Kotin; Kotka; Kotun; Krixton;
 Kroj; Labyrint; Ladona; Lipton; Levander; Lix; Lokomoko;
 Lopo; Lumba; Lycce; Malan; Malix; Manzini; Marbella;
 Marl; Mars; Maver; Miami; Moul; Mucco; Murcal; Myx;
 Nabi; Naon; Neno; Nergi; Neromi; Nirra; Norba; Notre;
 Nycco; Obrino; Occy; Odix; Onyx; Orienke; Ossion; Palma;
 Patience; Peck; Petova; Phuket; Poseidon; Pote; Puo;
 Puxo; Raji; Rexon; Rutop; Rügen; Ryger; Sappa; Shadur;
 Sikkim; Talk Tube; Talking Tube Hose; Tarrali; Tergo;
 Tomela; Torresse; Tremo; Trier; Trition; Turello; Ugur;
 Ula; Umon; Utopia; Vadito; Vagabond; Valaia; Viking; Volta;
 Wob; Wallau, Wana; Woodstock; Zapata;

Parameters:

Combination playground systems are comprised of platform, barrier, beam, guardrail and post in color options

Module dimension: 1.00m

Metal material: Galvanized and powder lacquered.

Post and beam: Laminated timber, steel tube 110mm.

Barrier material: Wood or plywood, steel, HPL

Floor material: Wood or plywood, steel, composite steel (recycled polyethylene)

Roof material: Wood or plywood, steel, polypropylene, HPL

Chain: Hotgalvanized chain with covering in solid polyurethane

Slide: Stainless steel and plastic slide-surface

Anchoring: Sunken concrete base

Sunken steel base/frame

Concrete foundation on site

Anchoring on concrete (expansion bolt)

Tested according to:

DIN EN 1176-1:2008

EN 1176-1:2008

DIN EN 1176-3:2008

EN 1176-3:2008

Production Facility(ies):

22757

Page 2 of 2