



Product Service

# CERTIFICATE

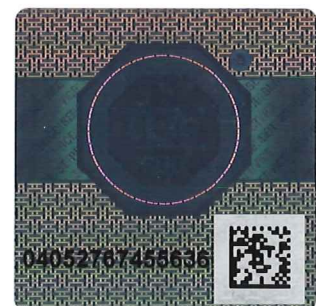
No. Z2 17 12 22757 01003

**Holder of Certificate: HAGS Aneby AB**Grännavägen 7  
578 23 Aneby  
SWEDEN**Certification Mark:****Product: Balance equipment**

The product was tested on a voluntary basis and complies with the essential requirements. The certification mark shown above can be affixed on the product. It is not permitted to alter the certification mark in any way. In addition the certification holder must not transfer the certificate to third parties. See also notes overleaf.

**Test report no.:** 713124267-10**Valid until:** 2022-12-26**Date,** 2018-01-12

Page 1 of 3

  
( Tobias Hofmann )



Product Service

**CERTIFICATE**

No. Z2 17 12 22757 01003

**Model(s):****HAGS: Energy (NRG):**

Amazon Basin; Andes; Angel Cascade; Apennines;  
 Bermuda Triangle; Blue Mountains; Cairngorms;  
 Cape Horn; Carpathian; Cheddar; Gorge; Devils Island;  
 Dolomites; Everest; Everglades; Fuji; Gaping Ghyll;  
 Giants Causeway; Grand Canyon; Himalayas; Hogs Back;  
 Jacobs Ladder; Jura; Kakum Canopy Walk; Kilimanjaro;  
 Klondike; Lobster Pot; Magellan Straits; Massif Central;  
 Matterhorn; Mont Blanc; Niagara Falls; Offas Dyke;  
 Okavango Swamp; Pillars Of Hercules; Rockies;  
 Ross Ice Shelf; Sierra Diablo; Snowdonia;  
 Tierra Del Fuego; Trinity; Yukon Log Roll;

**Norleg:**

Hinderbana Norleg

**Cluster:**

Ability; Balance; Connect; Function; Gravity; Hopper;  
 Pirouette; Sea Swell; Wiggler; Wizzer;

**UniMini Steel:**

Adventure Trail; Adventure Trail Bågbro;  
 Adventure Trail Klätterbro; Adventure Trail Kryptunnel;  
 Adventure Trail Nätbro; Adventure Trail Stegbro

**Parameters:****HAGS Energy (NRG):**

Balance equipment, either as single device  
 and/or as play-trail and/or as cluster.

Material: Steel tube with 114/89 mm diameter  
 and with a thickness of 5mm. Spray-galvanized  
 and polyester-covered.

Attachment component: Stainless steel

Ropes/nets: 18mm or 24mm polypropylene with steel core.

Stepping stones: Recycled rubber

Walkway: Recycled plastic

**HAGS Hinderbana Norleg:**

Made of: robinia, steel.

Dimensions(LxW): 31 m x 7.1 m

Further technical data see attachment.

**Tested  
according to:**

DIN EN 1176-1:2017

EN 1176-1:2017

**Production  
Facility(ies):**

02994

Page 2 of 3

THF

**HAGS Cluster:**

Balance Equipment, either as single device and/or as play-trail and/or as cluster.

**Material:**

Pirouette: Rotating posts made of tubular steel, pre-galvanized and powder-coated, mounted on a ball-bearing mechanism.

Hopper: platform made of micro cell foam on a weather-resistant plywood core.

Balance Beam: planed laminated timber of 93x93 mm,

Frame made of 33 mm hot-galvanized tubular steel.

Wiggler: made of 38/114 steel tube pre-galvanized (powder-coated). Walkway made of micro cell foam and ecogrip (polyethylen)

**HAGS UniMini Steel:**

Module dimension: 0.667m

Steel material: Galvanized and powder lacquered.

Post: Steel tube 70mm.

Other materials: HPL, polypropylene

Chain: Hot galvanized chain with covering in solid polyurethane

**Anchoring:**

Sunken concrete base

Sunken steel base/frame

Concrete foundation on site

Anchoring on concrete (expansion bolt)